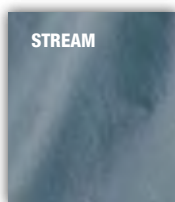
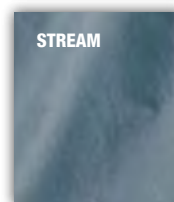
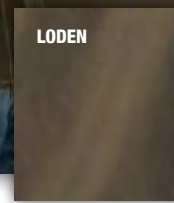




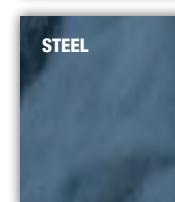
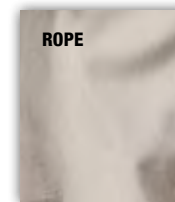
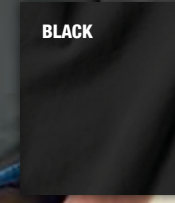
4302
dune



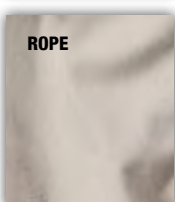
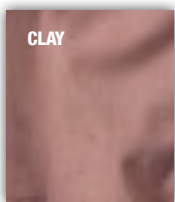
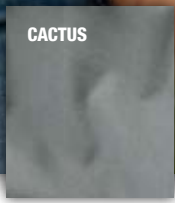
4301
loden



4285
cactus



8284
clay



for her

WOVENS

DRI DUCK

**4302 | DRI DUCK
Angler Short Sleeve Poplin Shirt**

- 3.5 oz., 70% cotton/30% nylon work shirt
- Teflon® coated
- UPF 30+ sun protection
- Vented back with Velcro® tab closure
- Mesh bellowed front utility pockets
- Industrial strength, heat resistant, extra durable mock horn buttons
- Contrast double-needle stitching throughout

Colors: Dune | Stream | White

Sizes: S-4X

**4301 | DRI DUCK
Outfitter Long Sleeve Poplin Shirt**

- 3.5 oz., 70% cotton/30% nylon work shirt
- Teflon® coated
- UPF 30+ sun protection
- Vented back with Velcro® tab closure
- Four front utility pockets
- Industrial strength, heat resistant, extra durable mock horn buttons
- Adjustable cuffs
- Button tabs for quick adjustment from long to short sleeves
- Contrast double-needle stitching throughout

Colors: Dune | Loden | Stream | White

Sizes: S-4X

**4285 | DRI DUCK
Brick Long Sleeve Dress Shirt**

- 6 oz., 100% cotton two-ply garment washed sueded soapstone ridge cloth
- Generous cut size
- UPF 50+ sun protection
- Four front chest pockets
- Industrial strength, heat resistant, extra durable mock horn buttons
- Adjustable cuffs
- Triple-needle stitched throughout

Colors: Black | Cactus | Rope | Steel

Sizes: S-4X

new colors

**8284 | DRI DUCK
Ladies' Mortar Long Sleeve Dress Shirt**

- 6 oz., 100% cotton two-ply sueded soapstone ridge cloth
- UPF 50+ sun protection
- Two front chest pockets
- Industrial strength, heat resistant, extra durable mock horn buttons
- Silhouette with front and back princess seams
- Button tabs for quick adjustment from long to short sleeves
- Open bottom with side vents, styled to fall on the hips
- Triple-needle stitched throughout

Colors: Cactus | Clay | Rope

Sizes: S-3X





13V0532
scarlet

13V0532 | VAN HEUSEN
Men's Short Sleeve Dress Twill

- 3.35 oz., 60% cotton/40% polyester wrinkle-resistant twill fabric
- Relaxed fit
- Classic button down collar
- Pearlized buttons throughout
- Left chest patch pocket
- Double-needle felled side seams

Colors: Black | Blue Dawn | Cobalt | Sage | Sandstone | Scarlet | White
Sizes: S-3X



13V0521
sage



13V0527
sandstone

13V0521 | VAN HEUSEN
Men's Long Sleeve Dress Twill

- 3.35 oz., 60% cotton/40% polyester wrinkle-resistant twill fabric
- Relaxed fit
- Classic button down collar
- Pearlized buttons throughout
- Left chest patch pocket
- Two button adjustable cuffs with button through sleeve placket
- Double-needle felled side seams

Colors: Black | Blue Dawn | Cobalt | Sage | Sandstone | Scarlet | White
Sizes: S-3X

13V0527 | VAN HEUSEN
Ladies' Three-Quarter Sleeve Dress Twill

- 3.35 oz., 60% cotton/40% polyester wrinkle-resistant twill fabric
- Feminine fit
- Point collar
- Narrow placket with pearlized buttons
- Two button adjustable cuffs with button through sleeve placket
- Double-needle felled side seams

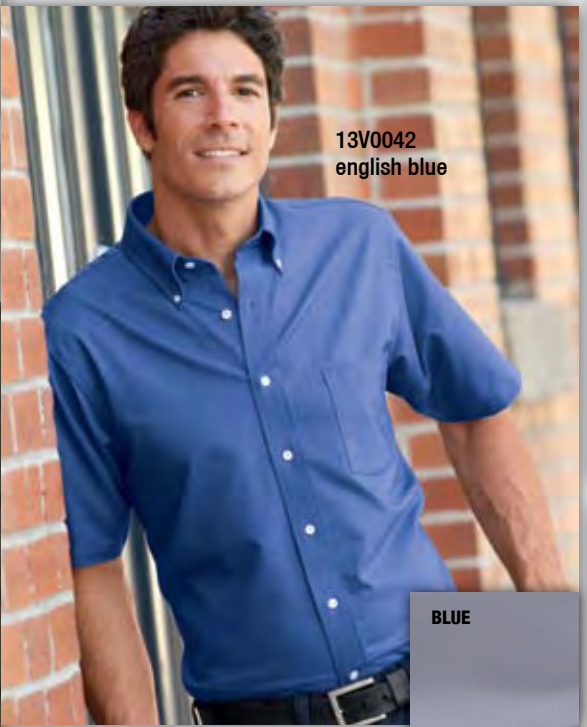
Colors: Black | Blue Dawn | Cobalt | Sage | Sandstone | Scarlet | White
Sizes: S-2X

VAN HEUSEN

NEW!

13V0113 | VAN HEUSEN
Men's Long Sleeve Silky Poplin

- 3.4 oz., 60% cotton/40% polyester wrinkle-resistant silky poplin fabric
 - Relaxed fit
 - Button down collar
 - Pearlized buttons throughout
 - Single-needle armholes
 - French sewn back
 - Left chest patch pocket
 - Fused collar, cuffs and placket
 - Double-needle felled side seams
- Colors:** Black | Cardinal | Chino | Royal | White
Sizes: S-3X



13V0042
english blue

13V0042 | VAN HEUSEN
Men's Short Sleeve Oxford

- 4.25 oz., 60% cotton/40% polyester wrinkle-resistant oxford cloth
 - Relaxed fit
 - Button down collar
 - Pearlized buttons throughout
 - Single-needle armholes
 - Back box pleat
 - Left chest patch pocket
 - Fused collar, cuffs and placket
 - Double-needle felled side seams
 - Cut with longer tuck in tails
- Colors:** Blue | English Blue | White
Sizes: S-5X

BLUE

ENGLISH BLUE

WHITE



13V0113
cardinal

BLACK

CARDINAL

CHINO

ROYAL

WHITE



13V0040
white

13V0040 | VAN HEUSEN
Men's Long Sleeve Oxford

- 4.25 oz., 60% cotton/40% polyester wrinkle-resistant oxford cloth
 - Relaxed fit
 - Button down collar
 - Pearlized buttons throughout
 - Single-needle armholes
 - Back box pleat
 - Left chest patch pocket
 - Fused collar, cuffs and placket
 - Two button adjustable cuffs with button through sleeve placket
 - Double-needle felled side seams
 - Cut with longer tuck in tails
- Colors:** Blue | English Blue | White
Sizes: S-5X

J613 | JONATHAN COREY
Ladies' Short Sleeve Heavyweight
Washed Twill

- 6 oz., 100% cotton washed twill
 - Feminine fit
 - Woodtone buttons
 - Button down collar
 - Shirrtail hem
- Colors:** Apple | Black | Chino | French Blue | Khaki | Light Blue | Navy | Red | Royal | White
Sizes: S-3X



J613
light blue

J612 | JONATHAN COREY
Ladies' Long Sleeve Heavyweight
Washed Twill

- 6 oz., 100% cotton washed twill
 - Feminine fit
 - Woodtone buttons
 - Button down collar
 - Two button adjustable cuff with intermediate button
 - Shirrtail hem
- Colors:** Apple | Black | Chino | French Blue | Khaki | Light Blue | Navy | Red | Royal | White
Sizes: S-3X



J612
red

J611 | JONATHAN COREY
Men's Short Sleeve Heavyweight
Washed Twill

- 6 oz., 100% cotton washed twill
 - Woodtone buttons
 - Button down collar
 - Left chest pocket
 - Shirrtail hem
- Colors:** Black | Chino | French Blue | Hunter Green | Khaki | Light Blue | Navy | Red | Royal | White
Sizes: S-3X



J611
chino



J610
black

J610 | JONATHAN COREY
Men's Long Sleeve Heavyweight
Washed Twill

- 6 oz., 100% cotton washed twill
 - Woodtone buttons
 - Button down collar
 - Left chest pocket
 - Two button adjustable cuff with intermediate button
 - Shirrtail hem
- Colors:** Black | Chino | French Blue | Hunter Green | Khaki | Light Blue | Navy | Red | Royal | White
Sizes: S-3X



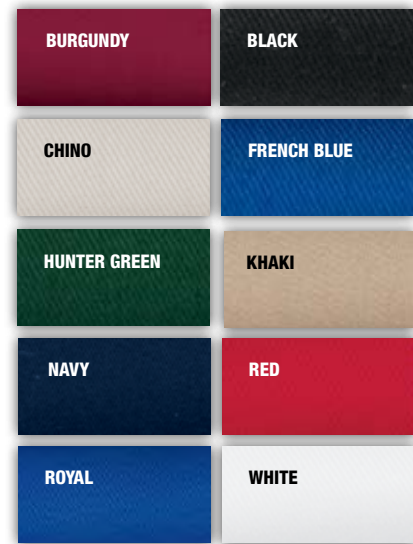
J622
french blue



J623
khaki

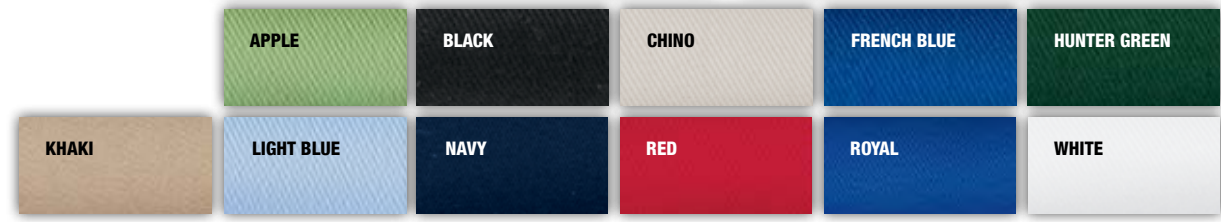
J622 | JONATHAN COREY
Men's Long Sleeve Performance
Brushed Twill

- 4.6 oz., 60% cotton/40% polyester brushed twill
 - Button down collar
 - Two button adjustable cuff with intermediate button
 - Left chest pocket
 - Shirrtail hem
 - Woodtone buttons throughout
- Colors:** Black | Burgundy | Chino | French Blue | Hunter Green | Khaki | Navy | Red | Royal | White
Sizes: S-3X



J623 | JONATHAN COREY
Men's Short Sleeve Performance
Brushed Twill

- 4.6 oz., 60% cotton/40% polyester brushed twill
 - Button down collar
 - Left chest pocket
 - Shirrtail hem
 - Woodtone buttons throughout
- Colors:** Black | Burgundy | Chino | French Blue | Hunter Green | Khaki | Navy | Red | Royal | White
Sizes: S-3X





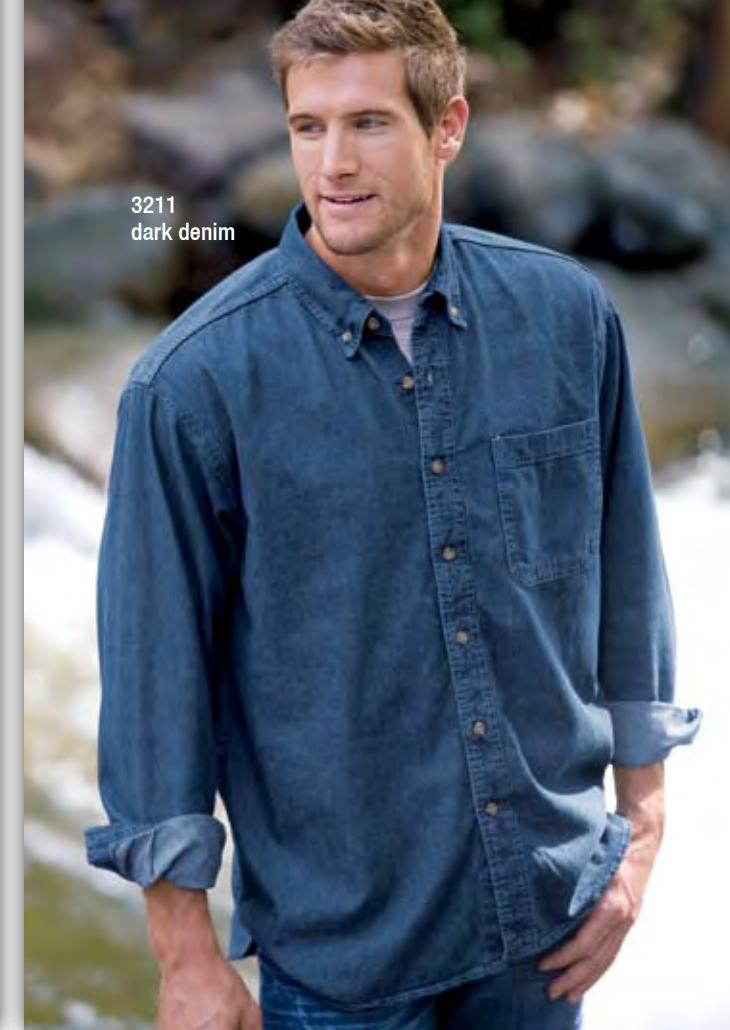
5201
white



3201
khaki



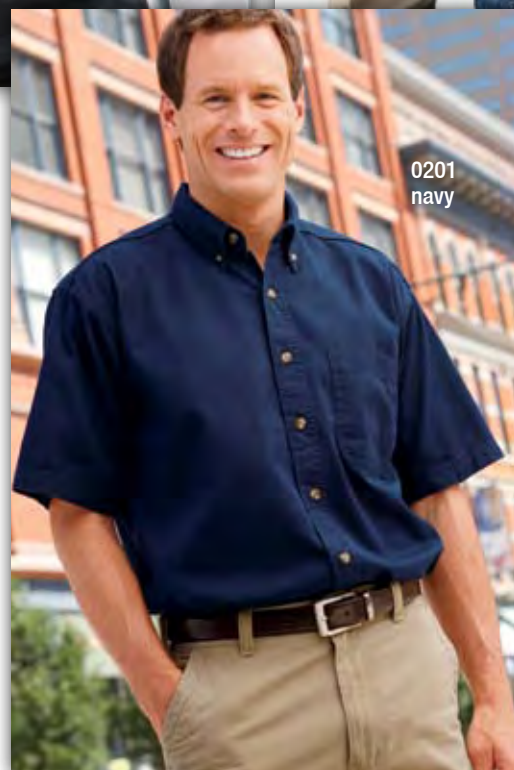
5211
light
denim



3211
dark denim

**5201 | SIERRA PACIFIC
Ladies' Long Sleeve Twill**

- 6 oz., 100% cotton twill
 - Front and back darts for a more feminine fit
 - Spread collar
 - Moon patch
 - Woodtone buttons
 - Single button cuff
 - Shirttail hem and felled seams for added strength
 - Reactive dyes for vibrant, fade resistant color
 - Double-needle stitching throughout
- Colors:** Black | Khaki | Navy | Red | White
Sizes: XS-3X



0201
navy

**3201 | SIERRA PACIFIC
Men's Long Sleeve Twill**

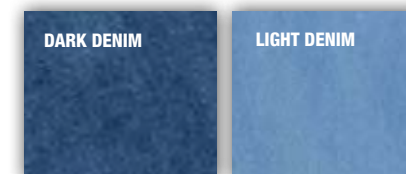
- 6 oz., 100% cotton twill
 - Button down collar
 - Two-ply back yoke with locker loop
 - Left chest pocket
 - Woodtone buttons
 - Two button adjustable cuffs with intermediate button
 - Shirttail hem with extended tail and felled seams for added strength
 - Reactive dyes for vibrant, fade resistant color
 - Double-needle stitching throughout
- Colors:** Black | Khaki | Navy | Red | White
Sizes: S-5X

**0201 | SIERRA PACIFIC
Men's Short Sleeve Twill**

- 6 oz., 100% cotton twill
 - Button down collar
 - Two-ply back yoke with locker loop
 - Left chest pocket
 - Hemmed sleeves and felled seams for added strength
 - Woodtone buttons
 - Shirttail hem with extended tail
 - Reactive dyes for vibrant, fade resistant color
 - Double-needle stitching throughout
- Colors:** Black | Khaki | Navy | Red | White
Sizes: S-5X

**5211 | SIERRA PACIFIC
Ladies' Long Sleeve Denim**

- 6.5 oz., 100% soft washed cotton
 - Spread collar
 - Double back yoke
 - Woodtone buttons
 - Single button cuff
 - Shirttail hem and felled seams for added strength
 - Double-needle stitching throughout
- Colors:** Dark Denim | Light Denim
Sizes: XS-3X



**3211 | SIERRA PACIFIC
Men's Long Sleeve Denim**

- 6.5 oz., 100% soft washed cotton
 - Button down collar
 - Two-ply back yoke with locker loop
 - Left chest pocket
 - Woodtone buttons
 - Two button adjustable cuffs with intermediate button
 - Shirttail hem with extended tail and felled seams for added strength
 - Double-needle stitching throughout
- Colors:** Dark Denim | Light Denim
Sizes: S-5X

**0211 | SIERRA PACIFIC
Men's Short Sleeve Denim**

- 6.5 oz., 100% soft washed cotton
 - Button down collar
 - Two-ply back yoke with locker loop
 - Left chest pocket
 - Woodtone buttons
 - Shirttail hem and felled seams for added strength
 - Double-needle stitching throughout
- Colors:** Dark Denim | Light Denim
Sizes: S-5X



0211
dark denim

