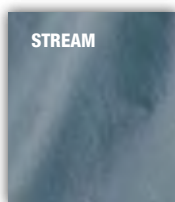
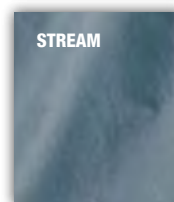
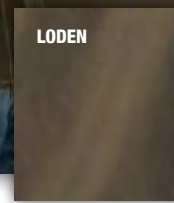




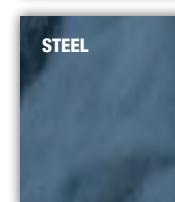
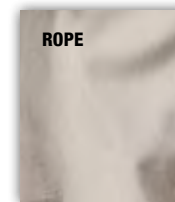
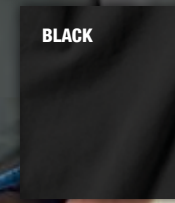
4302  
dune



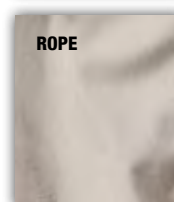
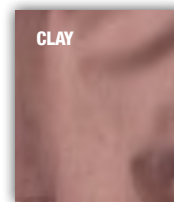
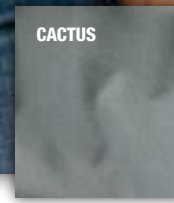
4301  
loden



4285  
cactus



8284  
clay



WOMENS

DRI DUCK

**4302 | DRI DUCK Angler Short Sleeve Poplin Shirt**

- 3.5 oz., 70% cotton/30% nylon work shirt
- Teflon® coated
- UPF 30+ sun protection
- Vented back with Velcro® tab closure
- Mesh bellowed front utility pockets
- Industrial strength, heat resistant, extra durable mock horn buttons
- Contrast double-needle stitching throughout

Colors: Dune | Stream | White

Sizes: S-4X

**4301 | DRI DUCK Outfitter Long Sleeve Poplin Shirt**

- 3.5 oz., 70% cotton/30% nylon work shirt
- Teflon® coated
- UPF 30+ sun protection
- Vented back with Velcro® tab closure
- Four front utility pockets
- Industrial strength, heat resistant, extra durable mock horn buttons
- Adjustable cuffs
- Button tabs for quick adjustment from long to short sleeves
- Contrast double-needle stitching throughout

Colors: Dune | Loden | Stream | White

Sizes: S-4X

**4285 | DRI DUCK Brick Long Sleeve Dress Shirt**

- 6 oz., 100% cotton two-ply garment washed sueded soapstone ridge cloth
- Generous cut size
- UPF 50+ sun protection
- Four front chest pockets
- Industrial strength, heat resistant, extra durable mock horn buttons
- Adjustable cuffs
- Triple-needle stitched throughout

Colors: Black | Cactus | Rope | Steel

Sizes: S-4X

new colors

**8284 | DRI DUCK Ladies' Mortar Long Sleeve Dress Shirt**

- 6 oz., 100% cotton two-ply sueded soapstone ridge cloth
- UPF 50+ sun protection
- Two front chest pockets
- Industrial strength, heat resistant, extra durable mock horn buttons
- Silhouette with front and back princess seams
- Button tabs for quick adjustment from long to short sleeves
- Open bottom with side vents, styled to fall on the hips
- Triple-needle stitched throughout

Colors: Cactus | Clay | Rope

Sizes: S-3X





13V0532  
scarlet

**13V0532 | VAN HEUSEN**  
**Men's Short Sleeve Dress Twill**

- 3.35 oz., 60% cotton/40% polyester wrinkle-resistant twill fabric
- Relaxed fit
- Classic button down collar
- Pearlized buttons throughout
- Left chest patch pocket
- Double-needle felled side seams

**Colors:** Black | Blue Dawn | Cobalt | Sage | Sandstone | Scarlet | White  
**Sizes:** S-3X



13V0521  
sage



13V0527  
sandstone

**13V0521 | VAN HEUSEN**  
**Men's Long Sleeve Dress Twill**

- 3.35 oz., 60% cotton/40% polyester wrinkle-resistant twill fabric
- Relaxed fit
- Classic button down collar
- Pearlized buttons throughout
- Left chest patch pocket
- Two button adjustable cuffs with button through sleeve placket
- Double-needle felled side seams

**Colors:** Black | Blue Dawn | Cobalt | Sage | Sandstone | Scarlet | White  
**Sizes:** S-3X

**13V0527 | VAN HEUSEN**  
**Ladies' Three-Quarter Sleeve Dress Twill**

- 3.35 oz., 60% cotton/40% polyester wrinkle-resistant twill fabric
- Feminine fit
- Point collar
- Narrow placket with pearlized buttons
- Two button adjustable cuffs with button through sleeve placket
- Double-needle felled side seams

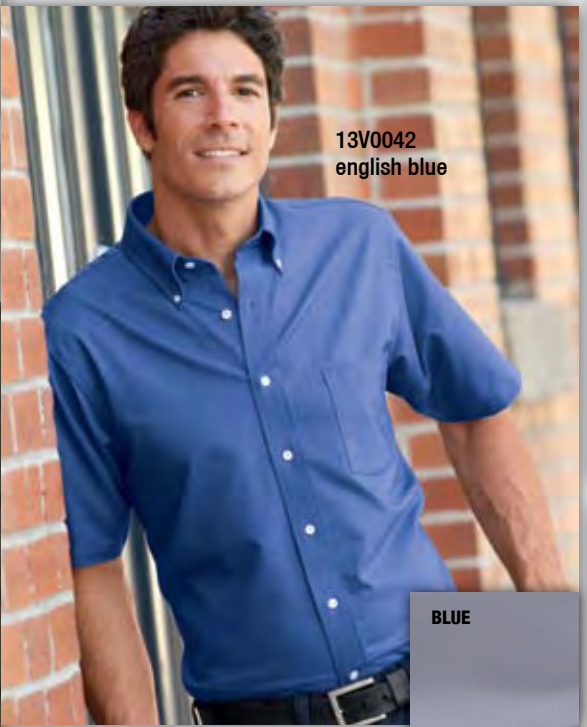
**Colors:** Black | Blue Dawn | Cobalt | Sage | Sandstone | Scarlet | White  
**Sizes:** S-2X

# VAN HEUSEN

**NEW!**

**13V0113 | VAN HEUSEN**  
**Men's Long Sleeve Silky Poplin**

- 3.4 oz., 60% cotton/40% polyester wrinkle-resistant silky poplin fabric
  - Relaxed fit
  - Button down collar
  - Pearlized buttons throughout
  - Single-needle armholes
  - French sewn back
  - Left chest patch pocket
  - Fused collar, cuffs and placket
  - Double-needle felled side seams
- Colors:** Black | Cardinal | Chino | Royal | White  
**Sizes:** S-3X



13V0042  
english blue

**13V0042 | VAN HEUSEN**  
**Men's Short Sleeve Oxford**

- 4.25 oz., 60% cotton/40% polyester wrinkle-resistant oxford cloth
  - Relaxed fit
  - Button down collar
  - Pearlized buttons throughout
  - Single-needle armholes
  - Back box pleat
  - Left chest patch pocket
  - Fused collar, cuffs and placket
  - Double-needle felled side seams
  - Cut with longer tuck in tails
- Colors:** Blue | English Blue | White  
**Sizes:** S-5X

BLUE

ENGLISH BLUE

WHITE



13V0113  
cardinal

BLACK

CARDINAL

CHINO

ROYAL

WHITE



13V0040  
white

**13V0040 | VAN HEUSEN**  
**Men's Long Sleeve Oxford**

- 4.25 oz., 60% cotton/40% polyester wrinkle-resistant oxford cloth
  - Relaxed fit
  - Button down collar
  - Pearlized buttons throughout
  - Single-needle armholes
  - Back box pleat
  - Left chest patch pocket
  - Fused collar, cuffs and placket
  - Two button adjustable cuffs with button through sleeve placket
  - Double-needle felled side seams
  - Cut with longer tuck in tails
- Colors:** Blue | English Blue | White  
**Sizes:** S-5X

**J613 | JONATHAN COREY**  
**Ladies' Short Sleeve Heavyweight**  
**Washed Twill**

- 6 oz., 100% cotton washed twill
  - Feminine fit
  - Woodtone buttons
  - Button down collar
  - Shirttail hem
- Colors:** Apple | Black | Chino | French Blue | Khaki | Light Blue | Navy | Red | Royal | White  
**Sizes:** S-3X



J613  
light blue

**J612 | JONATHAN COREY**  
**Ladies' Long Sleeve Heavyweight**  
**Washed Twill**

- 6 oz., 100% cotton washed twill
  - Feminine fit
  - Woodtone buttons
  - Button down collar
  - Two button adjustable cuff with intermediate button
  - Shirttail hem
- Colors:** Apple | Black | Chino | French Blue | Khaki | Light Blue | Navy | Red | Royal | White  
**Sizes:** S-3X



J612  
red

**J611 | JONATHAN COREY**  
**Men's Short Sleeve Heavyweight**  
**Washed Twill**

- 6 oz., 100% cotton washed twill
  - Woodtone buttons
  - Button down collar
  - Left chest pocket
  - Shirttail hem
- Colors:** Black | Chino | French Blue | Hunter Green | Khaki | Light Blue | Navy | Red | Royal | White  
**Sizes:** S-3X



J611  
chino



J610  
black

**J610 | JONATHAN COREY**  
**Men's Long Sleeve Heavyweight**  
**Washed Twill**

- 6 oz., 100% cotton washed twill
  - Woodtone buttons
  - Button down collar
  - Left chest pocket
  - Two button adjustable cuff with intermediate button
  - Shirttail hem
- Colors:** Black | Chino | French Blue | Hunter Green | Khaki | Light Blue | Navy | Red | Royal | White  
**Sizes:** S-3X



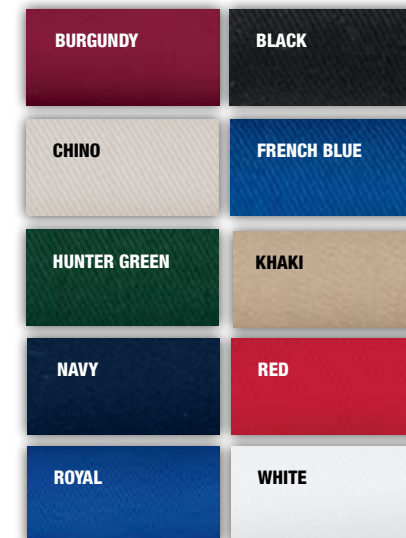
J622  
french blue



J623  
khaki

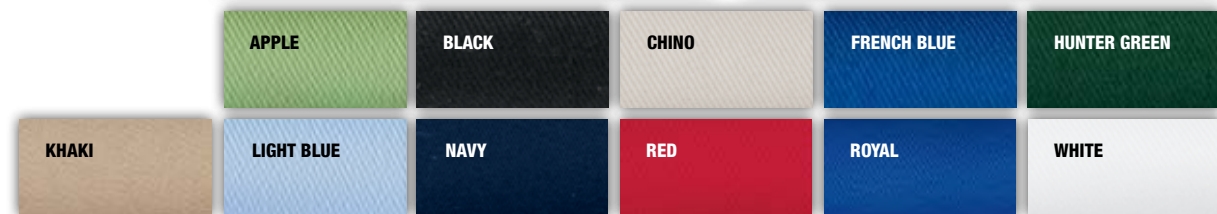
**J622 | JONATHAN COREY**  
**Men's Long Sleeve Performance**  
**Brushed Twill**

- 4.6 oz., 60% cotton/40% polyester brushed twill
  - Button down collar
  - Two button adjustable cuff with intermediate button
  - Left chest pocket
  - Shirttail hem
  - Woodtone buttons throughout
- Colors:** Black | Burgundy | Chino | French Blue | Hunter Green | Khaki | Navy | Red | Royal | White  
**Sizes:** S-3X



**J623 | JONATHAN COREY**  
**Men's Short Sleeve Performance**  
**Brushed Twill**

- 4.6 oz., 60% cotton/40% polyester brushed twill
  - Button down collar
  - Left chest pocket
  - Shirttail hem
  - Woodtone buttons throughout
- Colors:** Black | Burgundy | Chino | French Blue | Hunter Green | Khaki | Navy | Red | Royal | White  
**Sizes:** S-3X





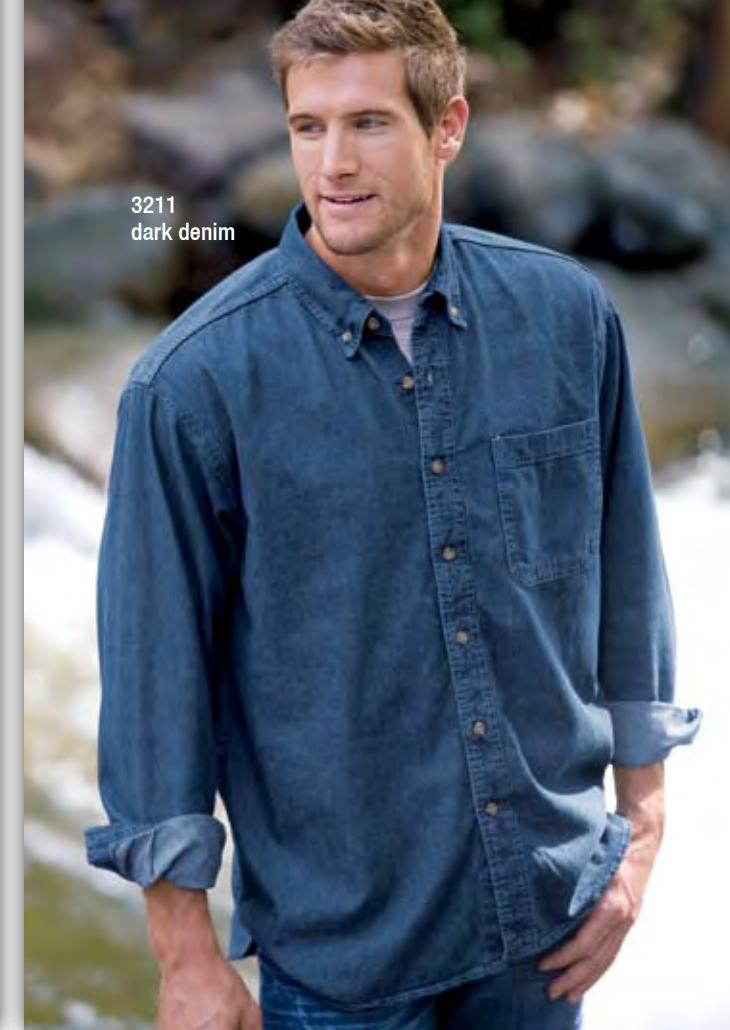
5201  
white



3201  
khaki



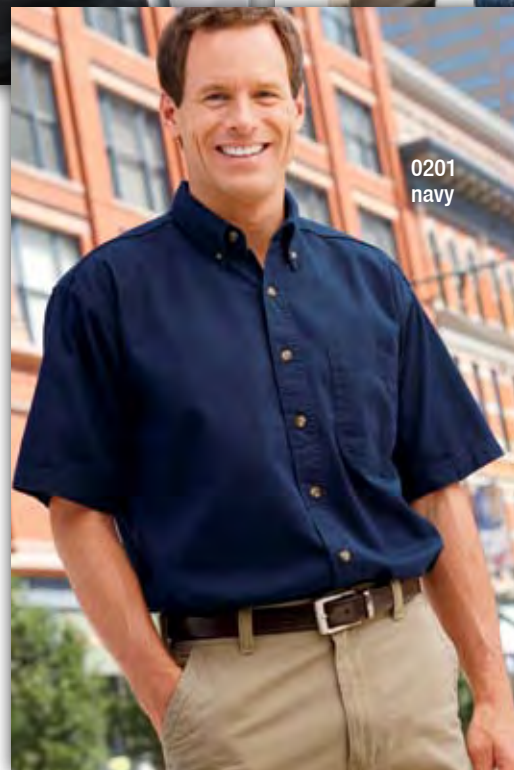
5211  
light  
denim



3211  
dark denim

**5201 | SIERRA PACIFIC  
Ladies' Long Sleeve Twill**

- 6 oz., 100% cotton twill
  - Front and back darts for a more feminine fit
  - Spread collar
  - Moon patch
  - Woodtone buttons
  - Single button cuff
  - Shirttail hem and felled seams for added strength
  - Reactive dyes for vibrant, fade resistant color
  - Double-needle stitching throughout
- Colors:** Black | Khaki | Navy | Red | White  
**Sizes:** XS-3X



0201  
navy

**3201 | SIERRA PACIFIC  
Men's Long Sleeve Twill**

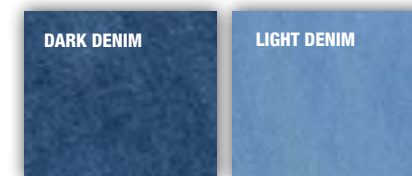
- 6 oz., 100% cotton twill
  - Button down collar
  - Two-ply back yoke with locker loop
  - Left chest pocket
  - Woodtone buttons
  - Two button adjustable cuffs with intermediate button
  - Shirttail hem with extended tail and felled seams for added strength
  - Reactive dyes for vibrant, fade resistant color
  - Double-needle stitching throughout
- Colors:** Black | Khaki | Navy | Red | White  
**Sizes:** S-5X

**0201 | SIERRA PACIFIC  
Men's Short Sleeve Twill**

- 6 oz., 100% cotton twill
  - Button down collar
  - Two-ply back yoke with locker loop
  - Left chest pocket
  - Hemmed sleeves and felled seams for added strength
  - Woodtone buttons
  - Shirttail hem with extended tail
  - Reactive dyes for vibrant, fade resistant color
  - Double-needle stitching throughout
- Colors:** Black | Khaki | Navy | Red | White  
**Sizes:** S-5X

**5211 | SIERRA PACIFIC  
Ladies' Long Sleeve Denim**

- 6.5 oz., 100% soft washed cotton
  - Spread collar
  - Double back yoke
  - Woodtone buttons
  - Single button cuff
  - Shirttail hem and felled seams for added strength
  - Double-needle stitching throughout
- Colors:** Dark Denim | Light Denim  
**Sizes:** XS-3X



**3211 | SIERRA PACIFIC  
Men's Long Sleeve Denim**

- 6.5 oz., 100% soft washed cotton
  - Button down collar
  - Two-ply back yoke with locker loop
  - Left chest pocket
  - Woodtone buttons
  - Two button adjustable cuffs with intermediate button
  - Shirttail hem with extended tail and felled seams for added strength
  - Double-needle stitching throughout
- Colors:** Dark Denim | Light Denim  
**Sizes:** S-5X

**0211 | SIERRA PACIFIC  
Men's Short Sleeve Denim**

- 6.5 oz., 100% soft washed cotton
  - Button down collar
  - Two-ply back yoke with locker loop
  - Left chest pocket
  - Woodtone buttons
  - Shirttail hem and felled seams for added strength
  - Double-needle stitching throughout
- Colors:** Dark Denim | Light Denim  
**Sizes:** S-5X



0211  
dark denim

